

Handling small parts?
We make it easy

DO YOU WANT TO KNOW MORE?

SEE OUR AVAILABLE BROCHURES ON PAGE 55

System 9000

In warehouses, machine workshops, manufacturing facilities, retail stores – even in restaurants and hospitals – there are numerous small objects to keep in order. Parts, tools, small products and ingredients all need to be organized for fast, efficient access and retrieval.

Failure to find them when they are needed wastes valuable time, is inefficient and causes irritation. At worst, it may have negative implications for the health and safety of the workforce or customers.

Modular bins

Bins with large inner volume for depths 300, 400, 500 and 600 mm. The open fronts can be fitted with a transparent front drop door. The sturdy profiled design allows stacking whenever needed. Convenient handgrips make for easy lifting and carrying.

Material: polypropylene.

A messy workplace, besides slowing things down, usually also means valuable space is being wasted. It doesn't do much for your company image either!

The problem usually lies in the absence of a user-friendly, purpose built storage system and it's easily solved. The right storage system for handling small parts makes many things easier for you and your workforce.

It saves space; it saves time; it creates a professional impression and in the end all this saves you money.

Storage bins

Our spacious storage bins provide maximum strength and stability. They fit panels and rails with handgrips.

Optional covers, dividers and labels.

Some bins also available in conductive or recycled material.

Material: polypropylene.



SMALL PARTS HANDLING MADE EASY

Schoeller Arca Systems has the solution to the ever-present problem of untidy little things. Providing outstanding versatility, System 9000 is the complete storage system for efficient small parts handling in industry and trade.

What do you get when you choose System 9000?

- Product usability that easily outperforms the competition
- Bins and trays that are designed to ensure easy identification of and access to their contents
- Durable product, designed for robustness using top quality materials
- Neat, high-finish designs in a choice of colours
- Space efficiency, with units designed for maximum storage volume and minimum wasted space in between
- System 9000 gives a highly competitive total cost of ownership thanks to its superior performance and durability

Once again, Schoeller Arca Systems turns out to be the brand name you can trust for innovative, high quality solutions.



SYSTEM 9000

Looking for the perfect storage cabinet?
- consider these alternatives...

①



②

① **Bin cabinet 9008.832**

Complete with 80 storage trays 9221,
44 storage trays 9223. Colour: blue.
Size 2000 x 980 x 500 mm.

② **Bin cabinet 9007.831**

Complete with 48 storage trays 9111,
32 storage trays 9113. Colour: blue.
Size 2000 x 980 x 400.
Also available in depth 500 mm, optional.

③ **Bin cabinet 9007.830**

Complete with 40 modular bins 9068.
Size 2000 x 980 x 400. Colour: blue.
Also available in depth 500 mm, optional.

④ **Bin cabinet 9006.830**

Complete with 72 storage trays 9074.
Colour: blue and yellow
Size 2000 x 950 x 250.

⑤ **Bin cabinet 9041.831**

Complete with 16 storage trays 9111,
12 storage trays 9113 and 4 modular bins 9068.
Colour: blue. Size 1000 x 980 x 400 mm.

③

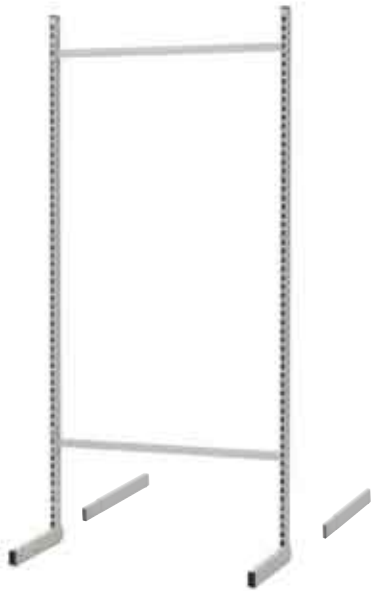


④



⑤





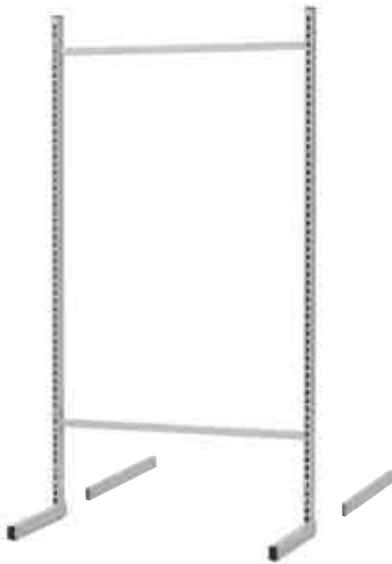
Floor rack
2000 x 900 x 410 mm
Art. No. 9010.830.501



Transport trolley 1625 mm high
with 6 tool panels 9015.



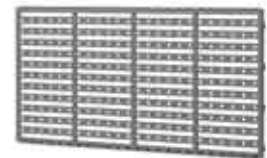
Transport trolley
1625 x 900 x 600 mm
incl. Loading shelf and cross bar
Art. No. 9020.830.501



Floor rack
1500 x 900 x 410 mm
Art. No. 9011.830.501



Floor rack 1500 mm high
with double mounting rails, 36 storage
bins 9074, 16 storage bins 9073, 8 storage bins
9063 and 6 storage bins 9072.



Tool panel
900 x 475 mm
Art. No. 9015.831.501



Wall rack
1000 mm incl. screws and plugs
Art. No. 9014.830.501



Base extension for floor racks
9010.830 and 9011.830
(340 mm) Art. No. 9012.830.501



Mounting rail
900 mm
Art. No. 9016.830.501



Tool shelf
875 x 300 mm
with brackets and ends
Art. No. 9022.830.501



Shelf
900 x 300 mm
with brackets
Art. No. 9025.830.501



Cross bar
875 mm
for racks and trolleys
Art. No. 9018.830.501



Tool shelf
875 x 600 mm
with brackets and rubber mat
Art. No. 9023.830.501



Shelf
900 x 400 mm
with brackets
Art. No. 9026.830.501

MODULAR AND STORAGE BINS

Modular bins

p.q = pack quantity

Versions and Colours

● Red 215
● Blue 624
● Yellow 316
● Transparent 100

A Width-way divider (p.q 50)
 Item No 9067.300

B Transparent front drop door
 (p.q 50), Item No 9067.400

C Length-way divider (p.q 50)
 Item No 9067.500

D Label (p.q 100)
 Item No 9067.830

E Adhesive label
 70 x 24 mm (p.q 3600)
 Item No 9141.835

F Adhesive label
 102 x 25 mm. (p.q 2000)
 Item No 4534.835



Item No	External/mm	Volume l	Weight/kg	Colour	Pallet unit/p.q	Accessories
300 x 230						
9067.000	300 x 230 x 150	8.0	0.5	Red, blue, yellow, transparent	192/12	A, B, C, D, F
400 x 230						
9068.005	400 x 230 x 150	11.0	0.6	Red, blue, yellow, transparent	120/12	A, B, C, D, E
500 x 230						
9069.005	500 x 230 x 150	14.0	0.8	Red, blue, yellow, transparent	90/15	A, B, C, D, F
600 x 230						
9070.000	600 x 230 x 150	17.0	0.9	Red, blue, yellow	80/10	A, B, C, D, F

Storage bins



Item No	External/mm	Volume l	Weight/kg	Colour	Pallet unit/p.q	Accessories
96 x 105						
9076.000	96 x 105 x 45	0.2	0.04	Red, blue, yellow	1920/20	-
170 x 105						
9075.000	170 x 105 x 75	1.0	0.1	Red, blue, yellow, transparent	640/20	B, D
250 x 148						
9074.005	250 x 148 x 130	3.7	0.3	Red, blue, yellow, transparent	512/32	B, D, F
350 x 206						
9073.005	350 x 206 x 150	8.8	0.5	Red, blue, yellow	160/16	A, B, C, F
9063.000	350 x 206 x 200	11.0	0.6	Red, blue, yellow	120/8	B, D, F
500 x 310						
9071.000	500 x 310 x 200	25.0	1.2	Red, blue, yellow	48/8	A, B, C, F
9072.000	500 x 310 x 250	33.0	1.6	Red, blue, yellow	48/8	A, B, C, D, F



Carrybox with 9 bins 9075 (p.q 8)
 Item No 9050.000
 370 x 175 x 300 mm
 Grey with red bins



Ergoget (p.q 20)
 Item No 9075.200
 width 105 mm
 Grey

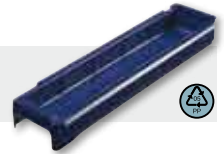
Storage Trays

Versions and Colours - 92-SERIES

● Blue 624



Divider



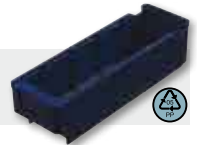
Item No	External mm.	Volume l	Weight kg.	Colour	Pallet unit/p.q
9221.760	500 x 115 x 62	2.3	0.3	Blue	520/26
9223.760	500 x 230 x 62	4.8	0.5	Blue	260/13
9231.760	600 x 115 x 62	2.9	0.4	Blue	390/26
9233.760	600 x 230 x 62	5.9	0.6	Blue	195/13
9241.760 Divider	115 mm			Transparent	/660
9243.760 Divider	230 mm			Transparent	/330
9241.830 Label with protector	115 mm				/500
9243.830 Label with protector	230 mm				/500

Versions and Colours - 45-SERIES

● Blue 624



Divider



Item No	External mm.	Volume l	Weight kg.	Colour	Pallet unit/p.q
4533.760	300 x 94 x 80	1.5	0.2	Blue	840/40
4531.760	400 x 188 x 80	3.1	0.3	Blue	420/20
4532.760	500 x 94 x 80	2.4	0.3	Blue	600/40
4530.760	600 x 188 x 80	4.3	0.4	Blue	300/20
4537.760	300 x 94 x 80	3.0	0.3	Blue	480/40
4536.760	500 x 188 x 80	5.3	0.5	Blue	240/20
4535.760 Divider	94 mm			Blue	/480
4534.760 Divider	188 mm			Blue	/240
4535.830 Label with protector	94 mm				/500
4534.830 Label with protector	188 mm				/500
4534.835 Adhesive label	102 x 25 mm				/2200

Versions and Colours - 91-SERIES

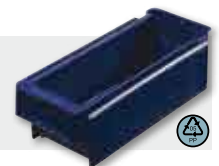
● Blue 624

● Red 215



Available in conductive material.
Item No XXXX.900

Divider



Item No	External mm.	Volume l	Weight kg.	Colour/Version	Pallet unit/p.q	Other
9101.760	300 x 115 x 100	2.4	0.3	Blue, red	560/16	
9103.760	400 x 230 x 100	4.9	0.4	Blue, red	280/8	
9111.765	500 x 115 x 100	3.4	0.3	Blue, red, ESD	480/24	
9113.765	600 x 230 x 100	7.1	0.5	Blue, red, ESD	240/12	
9121.765	300 x 115 x 100	4.4	0.4	Blue, red, ESD	320/20	
9123.765	400 x 230 x 100	8.7	0.6	Blue, red, ESD	144/9	
9131.765	500 x 115 x 100	5.2	0.5	Blue, red, ESD	320/16	
9133.765	600 x 230 x 100	10.2	0.7	Blue, red, ESD	160/8	
9141.761 Divider	115 mm			Transparent	/480	
9143.761 Divider	230 mm			Transparent	/240	
9141.830 Label with protector	115 mm				/500	
9143.830 Label with protector	230 mm				/500	
9141.835 Self-adhesive label	70 x 24 mm				/3600	
9143.835 Self-adhesive label	190 x 30 mm				/900	