

mobile shelving

SPACE-EFFICIENT SHELVING

STORAGE DESIGN LIMITED

Tel: 01446 772614

Fax: 01446 774770

info@storage-design.co.uk

www.storage-design.co.uk





to save or create space

Effective storage systems are designed to provide efficient storage and retrieval.

That's why every mobile shelving system, whilst maximising the use of floor space for storage, will also give excellent accessibility to items stored.

Mobile shelving is most effective in saving space, as it eliminates the need for several access aisles. Because the shelving moves along floor tracks, the space for only one aisle is needed. When an item is required the particular shelving bay is identified and an adjacent aisle is created by moving the mobile shelving units apart.

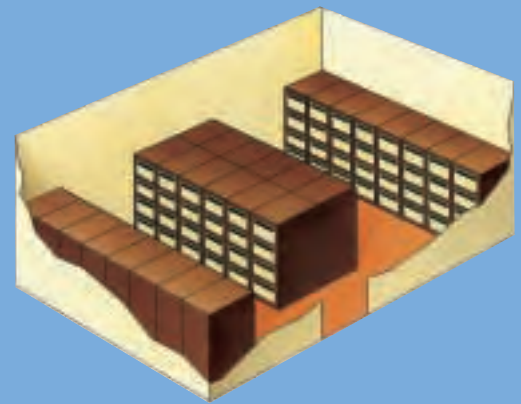
Mobile shelving is opened and closed by pull handles, hand driven mechanical systems or electric motors with push-button control.

Additional benefits of mobile shelving include the efficient location of items and security - mobile units can be closed and locked together to prevent unauthorised access.

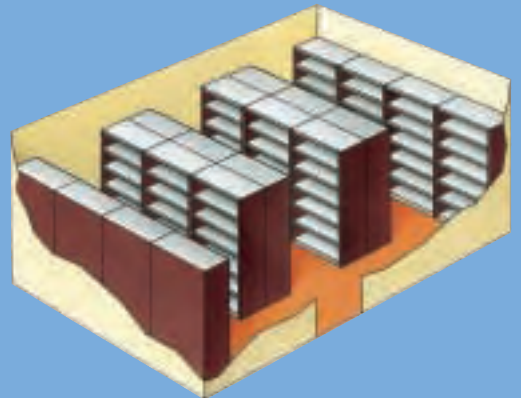
Mobile shelving systems provide much more efficient space utilisation compared to static shelving or conventional filing solutions such as cabinets and cupboards.

As well as saving space, mobile systems are ideal where sensitive or expensive items are stored because the systems can be closed up and locked to restrict access.

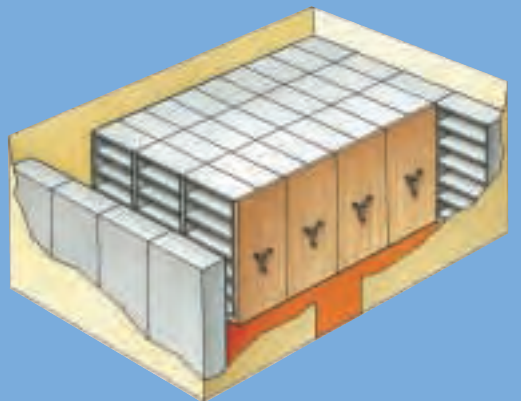




These examples are based on a nominal room size 5.5 x 4 metres. 28 four-drawer filing cabinets would provide approximately 78 linear metres of filing.



Static shelving provides a filing capacity of 120 linear metres with better versatility and accessibility. However, static shelving does require the floor space for separate aisles to access all of the shelf positions.



Mobile shelving which uses only one access aisle increases the filing capacity to 192 linear metres. When a document is required the particular shelving bay is identified and an adjacent aisle created by moving the mobile shelving units apart.



Alternatively Mobile shelving can reduce the space required for storage. Up to 50% of the floor space can be released for other uses when compared with filing cabinets and 38% more with static shelving.

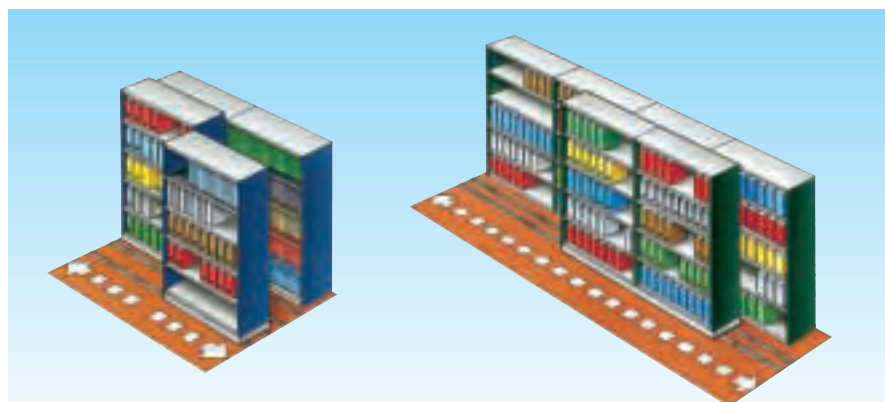


roll-aside

Mobile shelving

Roll-aside mobile shelving is ideal in small offices or awkward shaped areas such as corridors or alcoves.

Shelving is mounted on chassis and tracks and is simply rolled aside to reach the units behind.



easiglide

electric mobile, easy to use, safe and space-efficient

Ideal for affordable document, office and general-purpose storage applications.

This easy to operate, electrically powered system provides an effortless mobile storage solution. Using simple push-buttons to control the low voltage DC power, EasiGlide even offers rechargeable battery back-up as standard.

EasiGlide solutions ensure correct operation of the mobile shelving system removing potential risks to operators, the equipment and other users.

Discrete, low profile controls are factory-installed directly within the shelving end panels. Compared to traditional hand-wheels, these do not protrude into the aisle and release more space for use as storage.

EasiGlide is simple to install, plugging into a standard 13 Amp supply, and causes minimal disruption in your workplace due to the use of pre-fabricated components throughout.



Batteries are kept fully charged via an integral low voltage contact system
Audible warning indicates when batteries require charging



LED indicators give visual confirmation that the batteries are charging



Compatible with Stormor Mono, Solo or Duo shelving to suit your particular storage requirements

Shelving bays and bases are moved individually to open an aisle by the operator pressing the button for the direction required. Movement continues as long as the button is depressed or until it docks alongside an adjacent base.



Low-profile base and modular infill floor/track design. Laid directly onto the floor so minimising disruption in your workplace





Individual aisles are easily accessed by pushing the button on the adjacent end panel.

powaglide

Electrically operated systems

Operation could not be simpler. Press the button on the end panel, next to where you want an aisle to open. Electric motors drive all the mobile bases aside. Smooth movement is ensured as the control system is designed to gradually increase and decrease power at the beginning and end of every operation.

The system comes factory fitted but is available for retro-fitting to suitable existing installations. No special power systems are required - just plug into a standard spare socket and it's ready to go. The master unit converts the supply to a safe 24 Volts DC which provides all of the power needs for the system. Battery back-up ensures the system can be operated in the event of a mains failure.



The large surface of the button allows easy operation.

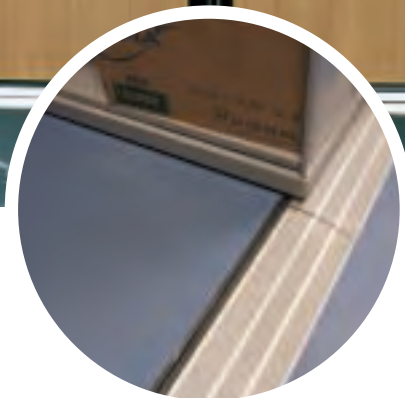


The system offers an unrivalled package of safety systems as standard. Safety sweeps fitted to both sides of each aisle immediately turn off all power when they are activated. Once the aisle is clear, the system is re-activated simply by pressing the start button on any aisle. Additional visual and audible warning signals ensure all personnel are aware that the system is in use. All safety systems and operating circuitry are automatically checked 30 times a second to ensure 100% correct operation.

The Powaglide option is available on both Supaglide and Duraglide systems.



Safety sweeps automatically shut the system down if there is an obstruction within the aisle.



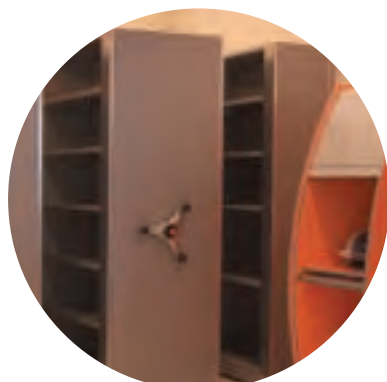
A ramp allows easy access.

supaglide

Manually assisted systems



A central push to lock safety button in the handle immobilises the unit to help prevent accidental closure on users.



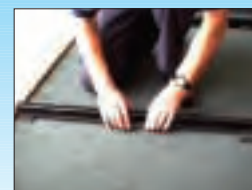
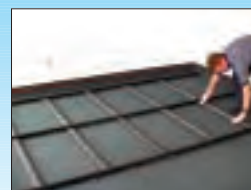
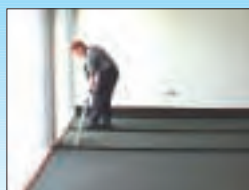
Alternative end panels are available to complement existing furniture or decor.

Ease of installation and relocation, as well as great aesthetics are at the heart of this system. The low profile base can accommodate a range of shelving systems to match your specific requirements, whether for bulk storage of archive material or easy access to daily office filing.

The system is installed quickly and easily using pre-formed components, does not require fixing to the floor and is laid directly onto existing flooring, even carpet tiles. This eliminates the construction work associated with conventional systems resulting in minimal disruption to your workplace during installation.

A grid of tracks and beams is quickly laid and levelled to provide a level and secure foundation for the mobile bases. Tongue and groove floor panels are then laid to provide an attractive, hard-wearing non-slip laminate finish. Alternatively flooring to accommodate carpet, vinyl or laminate finishes can also be specified. A ramp edging finishes the system and allows easy access for users, even with trolleys.

The pre-assembled bases which incorporate integral anti-tilt safety feature are simply placed onto the tracks ready for the shelving to be added.





For storing...

Mobile storage minimises the bad habits of poor house-keeping so losses, damages and accidents are reduced.



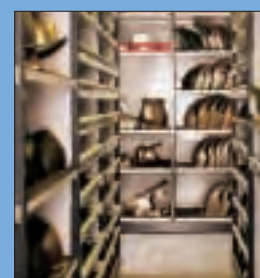
Reference or library books



Garment hanging



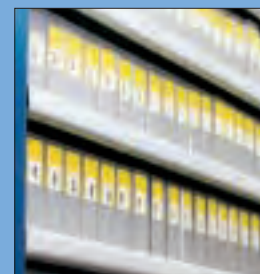
Medical Records



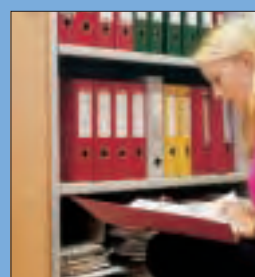
Museum collections



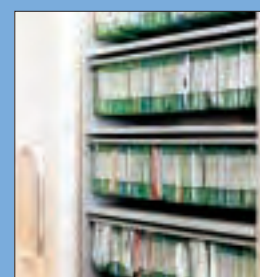
Court warrant cases



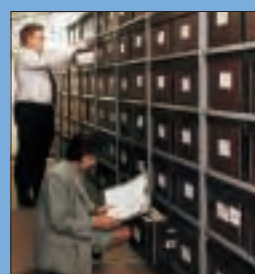
Digital data



Lever arch files



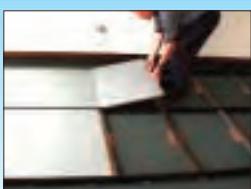
Live or soft filing



Archive boxes



Food test samples







duraglide

Standard mobile systems

For larger shelving installations or where floor quality is variable Moresecure's range of standard mobiles comes into it's own. With a choice of different types of rails and bespoke chassis sizes, these mobiles are ideal for heavier loads or for longer runs.

Duraglide mobiles can accommodate any of Moresecure's shelving systems and can also be used with Longspan if high or wide load capacity is required. Various track systems can be specified - tailored to the floor conditions - including surface mounted, in-situ or surface profile tracks for raised access floors. This allows installation to be carried out in all types of environments, from basements to stockrooms, from laboratories to archives.

As with the Supaglide system, shelving can be fitted with decorative end panels to match the surrounding interior décor.

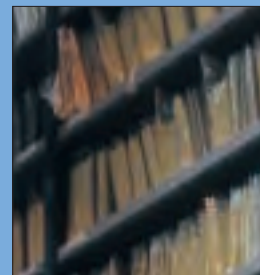
This standard system can accommodate far higher loads, but can still be accessed easily by the geared manually assisted drive system. Powaglide electrical drive system can also be specified.

For storing...

Mobile systems are ideal for storing sensitive or expensive items because the shelving can be closed up and locked to restrict access.



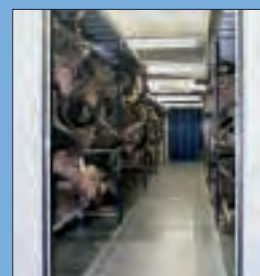
Technical libraries



Central record stores



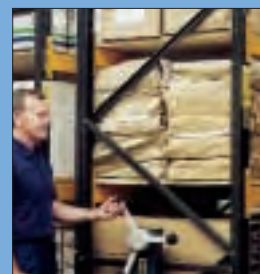
Medical records



Antiquities



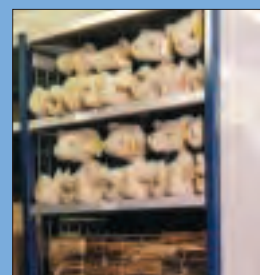
Bulk archives



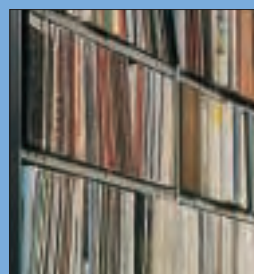
Heavy goods



Books



Retail stock



Vinyl records



Box files

storage solutions

Mobile shelving is only one element in our comprehensive portfolio. We can also provide:-



COMMERCIAL SHELVING



PALLET RACKING



JUST SHELVING



HEAVY DUTY SHELVING



**ANGLE AND SQUARE TUBE
CONSTRUCTION SYSTEMS**



SMALL PARTS STORAGE



MULTI TIER SHELVING



PERSONAL STORAGE



**COMMERCIAL AND
WORKPLACE EQUIPMENT**



moresecure
INTERNATIONAL
STORAGE PRODUCTS



For further information on Moresecure products, please contact your local distributor:

STORAGE DESIGN LIMITED

Tel: 01446 772614

Fax: 01446 774770

info@storage-design.co.uk

www.storage-design.co.uk

decorative panels

Decorative panels are available in a wide range of colours and finishes.
Shown below are a small sample of our regular range.
We are able to source specific or special finishes at extra cost.
Please ask for details.

STORAGE DESIGN LIMITED

Tel: 01446 772614

Fax: 01446 774770

info@storage-design.co.uk

www.storage-design.co.uk

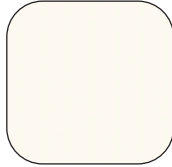
COLOURS



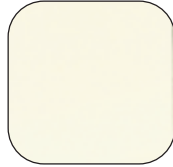
White
Matt/Pearl/Ash



Super White Ash



Ivory
Matt/Pearl



Alabaster
Matt/Pearl/Ash



Grey Anthracite
Pearl



Black
Pearl



Titan
Satin



Grey Dapple
Pearl

WOODGRAINS



American Light Oak
Woodgrain



Standard Maple
Woodgrain



Canadian Maple
Satin



Warm Maple
Satin



Standard Beech
Woodgrain



Bavarian Beech
Satin



Samerburg Beech
Satin



Warmington Pear
Satin



Conference Pear
Satin



Calvados
Satin



Cherry
Satin



Limed Oak
Woodgrain



Mahogany
Woodgrain



Sand Pine
Satin



Larch
Satin



Japanese Ash
Woodgrain



French Rustic Oak
Woodgrain



Atlanta Oak
Woodgrain



Apple
Satin



Blond Ash
Woodgrain

Colours shown are for illustrative purposes only and may vary from actual finishes.

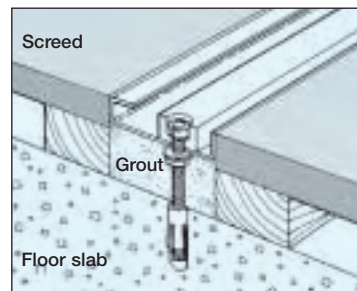
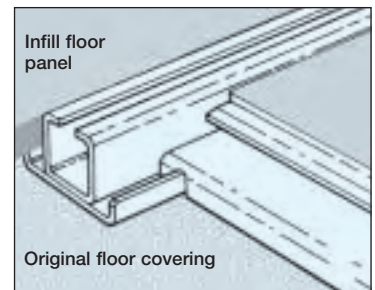
STORAGE DESIGN LIMITED**Tel: 01446 772614****Fax: 01446 774770****info@storage-design.co.uk****www.storage-design.co.uk**

track options

	powaglide	easiglide	duraglide	supaglide	roll-aside
Integral	✓	✓	✗	✓	✓
Surface mounted	✓	✓	✓	✓	✗
in-situ	✓	✓	✓	✓	✗
Surface profile	✓	✓	✓	✓	✗

integral track and floor

Does not require fixing to the floor and is laid directly onto existing flooring. A grid of tracks and beams is quickly laid and levelled to provide a level and secure foundation. Tongue and groove floor panels are then laid to provide an attractive, hard-wearing non-slip laminate finish.

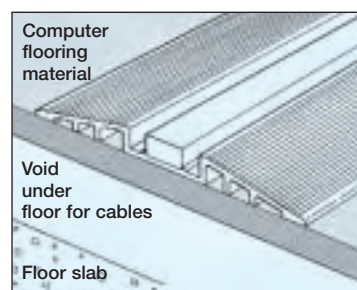
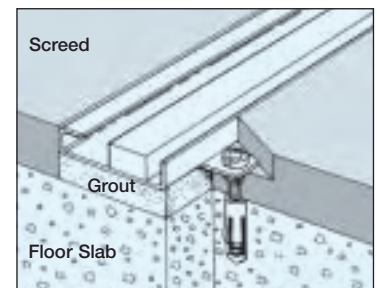


surface mounted track

Grouted underneath, to provide a level track with solid foundation and guidance for mobile bases. USED WITH AN INFILL FLOOR.

in-situ track

Grouted underneath, provides a level track with solid foundation and guidance for mobile bases.



surface profile track

Single aluminium ramp section, with inset steel guide track.

Low profile track, located directly onto very level floors which are level to within a tolerance of +/- 2mm in 1000mm. A quick and easy to install track system which can be laid onto concrete, wood and 'computer' floors.