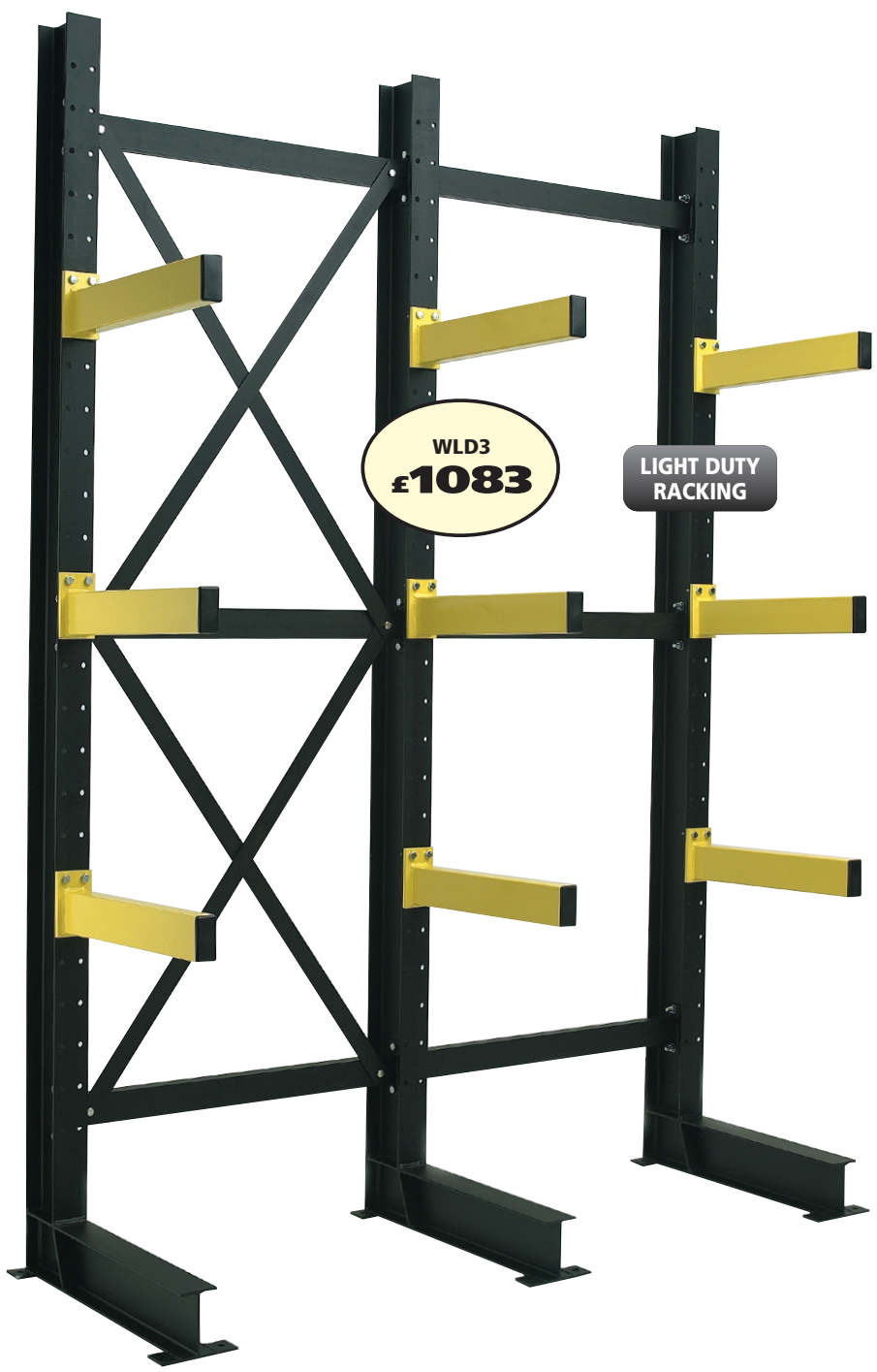
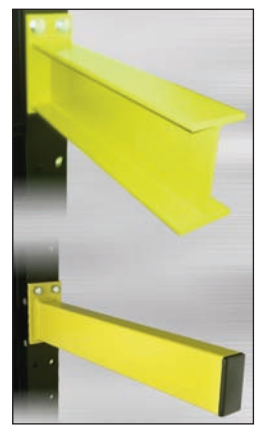




Cantilever Racking



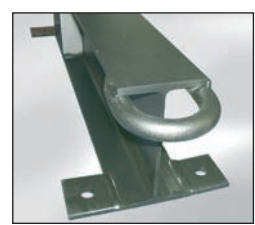
Arms are connected to uprights with two bolts and arm height is adjustable in 150mm increments



Arm variations



Removable retaining pins



Tyre/Head guards available on all cantilever racking



Detail of bracing connection on galvanised rack

Cantilever Racks

✓ Each rack manufactured to your specific requirements

- Wide range of applications – Arm capacity from 20kg to 2000kg (UDL)
- Double sided racks available
- Height and arm levels variable to suit your need – standard vertical pitch is 150mm
- Load notices indicating safe working load supplied with all racks
- Black uprights and yellow arms as standard – other colours and finishes available (eg. galvanised)
- All racks include shims and floor fixings
- Experienced installation teams
- Choose from the selection below or contact us with your specific requirements

Cantilever Racking - 3 Upright Racks

PRODUCT TYPE	UPRIGHT HEIGHT	ARM LENGTH	UPRIGHT CENTRES	ARMS	ARM CAPACITY	ORDER REF	PRICE
LIGHT DUTY	2700mm	800mm	1000mm	3	250kg	WLD3	£1083.00
MEDIUM DUTY	4500mm	1000mm	1200mm	4	500kg	WMD4	£1699.00
HEAVY DUTY	6000mm	1200mm	1500mm	5	1000kg	WHD5	£2675.00

38 Bespoke manufacturing with tailored designs to suit your particular application at a competitive price. Please call with your requirements