

## Book and Shelf Trolleys



### Book Trolley

Capacity 250kg UDL

**Double sided with angled shelves**

Popular design for libraries, offices, classrooms, laboratories etc.

Tubular steel frame with sheet steel shelves.

Overall L x W x H: 880 x 550 x 1115mm

Fitted with 4 swivel castors 125mm, grey non-marking tyres and thread guards.

Weight: 46kg

Red Ref  
Green Ref  
Yellow Ref  
Blue Ref

**TT26/R**  
**TT26/G**  
**TT26/Y**  
**TT26/B**

#### Colour options



#### Optional extras

**Total stop brakes**

Ref **B052** (pair)

**Revolving buffer corners**

Ref **B172** (set)



## Table and shelf Trolleys



Model: T208

A range of sturdy trolleys with choice of:

fixed laminate shelves  
with edge retaining rods

or removable and reversible  
steel trays (18mm lip or flush).

150kg or 300kg capacities



Model: T235

#### 150kg capacity trolleys

	H x W x D	Laminate	Steel
2 tier	1000 x 650 x 600	<b>T201</b>	<b>T204</b>
	1000 x 800 x 460	<b>T202</b>	<b>T205</b>
	1000 x 950 x 600	<b>T203</b>	<b>T206</b>
3 tier	1000 x 650 x 600	<b>T207</b>	<b>T210</b>
	1000 x 800 x 460	<b>T208</b>	<b>T211</b>
	1000 x 950 x 600	<b>T209</b>	<b>T212</b>

Option 2 x braked 100mm dia castors T2TSBL

#### 300kg capacity shelf trolleys

	H x W x D	Laminate	Steel
4 tier	1250 x 1065 x 600	<b>T225</b>	<b>T228</b>
	1250 x 1065 x 700	<b>T226</b>	<b>T229</b>
	1250 x 1265 x 800	<b>T227</b>	<b>T230</b>
5 tier	1600 x 1065 x 600	<b>T231</b>	<b>T234</b>
	1600 x 1065 x 700	<b>T232</b>	<b>T235</b>
	1600 x 1265 x 800	<b>T233</b>	<b>T236</b>

Option 2 x braked 160mm dia castors T2TSBH

## Book and Shelf Trolleys



## Low Cost Tray Trolley

**Capacity 150 kg UDL**

2 or 3 fixed steel trays

Fully welded construction.

Tray size 762 x 457 mm

Fixed steel trays with smooth folded lips.

Trays are welded in position at heights:

2 tier - 265; and 840 mm

3 tier - 265; 555 and 840 mm

O/A height: 840mm

O/A L x W: 890 x 465mm

Wheels: 4 swivel castors with

125 mm dia. grey non marking tyres with thread guards.

Choice of finish: Blue or white epoxy.

Weight: 2 tier 19 kgs 3 tier 23 kgs

**2 tier** blue Ref: **TT70**

white Ref: **TT70W**

**3 tier** blue Ref: **TT71**

white Ref: **TT71W**

**Total stop brakes**

Ref: **B 047** (pair)

## Tray Trolleys

**Capacity 200Kg UDL**

2 or 3 removable steel trays or fixed ply shelves

Removable and reversible steel trays for flush or recessed fitting.

Welded tube and angle construction.

Overall height 1065 mm

125 mm dia. stem fitting castors.

Grey non marking tyres with thread guards.

**48 HOURS DESPATCH**



Model: TT63

Model: TT62

Choice of elegant and smart white trays in blue frame, or all blue. Tough durable epoxy finish throughout

### Options

Total Stop Brakes  
always recommended  
Ref: **B047** (pair)

Revolving Protector Buffers to protect  
walls and trolley. Factory fitted  
Ref: **B171** (set)



Model: TT73



Model: TT61

No. of trays		2-tray		3-tray	
Tray size L x W	mm	760 x 457	1065 x 610	760 x 457	1065 x 610
Tray heights	mm	245 : 945		245 : 595 : 945	
Weight	Kgs	25	38	34	52
TTW Series	Ref	<b>TT62</b>	<b>TT66</b>	<b>TT63</b>	<b>TT67</b>
White epoxy trays					
TTB Series	Ref	<b>TT72</b>	<b>TT76</b>	<b>TT73</b>	<b>TT77</b>
Blue epoxy trays					
TT60 Series	Ref	<b>TT60</b>	<b>TT64</b>	<b>TT61</b>	<b>TT65</b>
Fixed ply trays	Wt.Kg	20	31	27	41



# Stainless steel Tray Trolleys

## Stainless steel trolleys

2 and 3 tier options 150kg capacity



All stainless steel, food standard trolleys, suitable for many clean and hygienic work environments: Hospitals, laboratories, catering and food preparation.



### Wheels

4 x 125mm dia white nylon swivel castors with stainless steel bearings and casings.  
2 braked castors available as an option.

### Shelf trays (removable)

Stainless steel shelf trays are removable and reversible, providing 18mm lip or flush top surfaces.

O/a height:	960mm	920mm
Tray heights:		
Top:	800mm	770mm
Middle:	525mm	510mm
Bottom:	250mm	250mm

### Stainless Steel Mobiles

	H x W x D	Ref
2 tier	960 x 855 x 465	<b>ST842SS</b>
	920 x 785 x 545	<b>ST752SS</b>
	920 x 990 x 545	<b>ST952SS</b>
3 tier	960 x 855 x 465	<b>ST843SS</b>
	920 x 785 x 545	<b>ST753SS</b>
	920 x 990 x 545	<b>ST953SS</b>
Option	2 x braked castors	<b>T2ITSBS</b>

## Steel trolleys with stainless steel trays option

2 capacities - 3 sizes - 2 or 3 tier  
laminate, steel or stainless shelf options

Grey epoxy finished tubular steel framework with choice of :

**fixed laminate shelves,**

**removable and reversible grey epoxy finished steel,**

**or stainless steel trays** (use as tray with 18mm lip, or flush).

Non marking grey rubber tyres on swivel castors.  
2 braked castors available as an option.



Laminate shelves



Steel trays



Stainless Steel trays

### Shelf trays

#### 75kg capacity

O/a height	850mm	880mm	960mm
Tray heights:			
Top:	740mm	760mm	840mm
Middle:	480mm	593mm	533mm
Bottom:	255mm	255mm	255mm

#### 150kg capacity

O/a height	920mm	960mm
Tray heights:		
Top:	770mm	800mm
Middle:	510mm	525mm
Bottom:	250mm	250mm

### 75kg capacity trolleys

	H x W x D	Laminate	Steel	Stainless
2 tier	850 x 670 x 420	<b>TT642L</b>	<b>TT642S</b>	<b>TT642SS</b>
	880 x 665 x 385	<b>TT632L</b>	<b>TT632S</b>	<b>TT632SS</b>
	960 x 785 x 465	<b>TT742L</b>	<b>TT742S</b>	<b>TT742SS</b>
3 tier	850 x 670 x 420	<b>TT643L</b>	<b>TT643S</b>	<b>TT643SS</b>
	880 x 665 x 385	<b>TT633L</b>	<b>TT633S</b>	<b>TT633SS</b>
	960 x 785 x 465	<b>TT743L</b>	<b>TT743S</b>	<b>TT743SS</b>
Option	2 x braked 100mm dia castors	<b>T2ITSBL</b>		

### 150kg capacity trolleys

	H x W x D	Laminate	Steel	Stainless
2 tier	960 x 785 x 465	<b>HT742L</b>	<b>HT742S</b>	<b>HT742SS</b>
	920 x 785 x 545	<b>HT752L</b>	<b>HT752S</b>	<b>HT752SS</b>
	920 x 990 x 545	<b>HT952L</b>	<b>HT952S</b>	<b>HT952SS</b>
3 tier	960 x 785 x 465	<b>HT743L</b>	<b>HT743S</b>	<b>HT743SS</b>
	920 x 785 x 545	<b>HT753L</b>	<b>HT753S</b>	<b>HT753SS</b>
	920 x 990 x 545	<b>HT953L</b>	<b>HT953S</b>	<b>HT953SS</b>
Option	2 x braked 125mm dia castors	<b>T2ITSBH</b>		



### 1200mm height model

O/A length x width x height	1090 x 500 x 1200 mm
External tray size L x W	900 x 500 mm
Bottom shelf height	280 mm
Middle shelf height	740 mm
Top shelf height	1200 mm

#### Wheels:

2 fixed and 2 swivel castors with 200mm dia red centred wheels fitted with solid rubber tyres and roller bearings

Finish: Blue epoxy

Weight 58 kg

Ref: **TT35**

### 900mm height model

O/A length x width x height	1090 x 500 x 900 mm
External tray size L x W	900 x 500 mm
Bottom shelf height	280 mm
Middle shelf height	590 mm
Top shelf height	900 mm

#### Wheels:

2 fixed and 2 swivel castors with 200mm dia red centred wheels fitted with solid rubber tyres and roller bearings

Finish: Blue epoxy

Weight 56 kg

Ref: **TT34**

### TT350 Series

Capacity 350kg

Strong construction from square and round section steel tubes and steel shelves with lip.



Special  
heavyweight  
tray trolleys  
custom built  
to your spec.  
if required

#### Optional extra

Total stop brakes

Ref: **B013** (pair)



### Industrial Tray Trolleys

**300 kg capacity UDL**

2 or 3 tray — steel or timber

#### Tough, High Capacity Industrial Design

Highly suited to industrial use: stores, workshops and factories

Heavy duty, fully welded angle and tube construction. Varnished ply timber panel trays

Plate fixing castors with 160 mm dia. rubber tyred wheels. Roller bearings. 2 swivel 2 fixed.

Finish: Blue or red epoxy

Overall dimensions		Shelf heights	
Length:	1070 mm	Top:	940mm
Width:	615 mm	Middle:	595mm
Height:	1045 mm	Bottom:	250mm

#### Optional Extra

Total Stop Brakes

Ref: **B024** (pair)

Capacity	300 kg		300 kg	
Tray L x W	1000 x 600 mm		1000 x 600 mm	
Type	Timber panel trays 10 mm raised edge		Steel panel trays 20mm raised edge	
No. of trays O/a Weight	2-Tray	3-tray	2-tray	3-tray
	40kgs	45kgs	50 kgs	57 kgs
	Blue Ref <b>TT36</b> Red Ref <b>TT36R</b>	<b>TT37</b> <b>TT37R</b>	<b>TT38</b> <b>TT38R</b>	<b>TT39</b> <b>TT39R</b>



# Heavy Duty Table Trucks



Models TT210T / TT220T  
2 heavy duty timber decks  
Heights: 275 : 895 mm



Models TT230T / TT240T  
Heavy duty top deck  
Height: 895 mm



Models TT210S / TT220S  
2 heavy duty steel decks  
Heights: 275 : 895 mm



Models TT230S / TT240S  
Heavy duty steel top deck  
Height: 895 mm

## HD Table Trucks

Ideal truck series for tough work in Stores, Warehouses, Factories and Workshops.

### General specification

Welded steel construction throughout.

Overall length = Deck length + 135mm

Overall width = Deck width + 20mm

Finish: Blue epoxy.

Wheels: 2 fixed 2 swivel castors 200 mm dia. rubber tyred wheels.

Timber or steel decks  
500 kg Capacity

Extremely  
stable,  
especially  
when fitted  
with optional  
Brakes

### Recessed Deck Option

Recessed top and bottom decks optional at no extra cost. Add suffix **RD** to chosen Ref.



### Optional extras

#### Brakes:

Total stop Ref: **B013** (pair)

### Protective bumper strips

(factory fitted)

Deck size	Ref
1000 x 700	<b>BS2</b>
1200 x 800	<b>BS3</b>

		Deck size 1000 x 700 mm		Deck size 1200 x 800 mm	
Type		Top deck only	Top and bottom deck	Top deck only	Top and bottom deck
wt.	kg	46	56	53	66
	Ref	<b>TT230T</b>	<b>TT210T</b>	<b>TT240T</b>	<b>TT220T</b>
Wt.	kg	44	52	50	64
	Ref	<b>TT230S</b>	<b>TT210S</b>	<b>TT240S</b>	<b>TT220S</b>

# Table and Workshop Trolleys

25



## TT100 Range

1, 2, 3 and 4 deck models.

Overall Length x Width x Height 1070 x 600 x 1160mm

Deck Length x Width 1000 x 600 mm

Capacity 250 kg UDL

Smart and attractive, narrow overall width - only 600 mm

### TT100 1 Deck

Base only with mesh ends/sides

Model combinations	Wt Kgs	Ref
7 2 fixed mesh ends 1 fixed full mesh side 1 removable full mesh side	51	TT110 (not illustrated)

### TT100 2 Decks

Decks at: 290 : 880 mm

Model combinations	Wt Kgs	Ref
1 2 fixed open ends	38	TT100
2 2 fixed mesh ends	46	TT102
3 2 fixed mesh ends 4 removable deck sides (170mm)	54	TT106

### TT100 3 Decks

Decks at: 290 : 650 : 1010mm

Model combinations	Wt Kgs	Ref
9 2 fixed open ends	46	TT113
10 2 fixed mesh ends	52	TT115

### TT100 4 Decks

Decks at 290 : 650 : 1010 : 1370 mm

Model combinations	Wt Kgs	Ref
11 2 fixed open ends	57	TT116
12 1 fixed open end 1 fixed mesh end	60	TT117
13 2 fixed mesh ends	64	TT118

#### General specification

High quality red epoxy coated finish tubular chassis frame.

2 fixed 2 swivel castors with 160 mm dia. rubber tyred wheels with bright steel centres. Brakes optional.

Bright zinc plated mesh infill panels as required. Fixed timber shelves with bright steel protector strips on both long sides.

Ideal for  
Warehouses  
Stores  
Supermarkets  
Factories  
Offices



#### Total Stop Brakes

Ref: B083 (pair)

Always recommended as an important safety feature. Suitable for all models

Special combinations custom built on request





## Table and workshop trolleys

### KDT Knock-down Workshop Trolleys



K-D Trolleys

	W x Dmm	Blue	Red	Grey
2 tier	650 x 400	KDT210B	KDT210R	KDT210GY
3 tier	650 x 400	KDT310B	KDT310R	KDT310GY
2 tier	900 x 500	KDT220B	KDT220R	KDT220GY
3 tier	900 x 500	KDT320B	KDT320R	KDT320GY
2 tier	800 x 450	KDT240B	KDT240R	KDT240GY
+ 1 drawer		KDT241B	KDT241R	KDT241GY
+ 2 drawers		KDT242B	KDT242R	KDT242GY
3 tier	800 x 450	KDT340B	KDT340R	KDT340GY
+ 1 drawer		KDT341B	KDT341R	KDT341GY
+ 2 drawers		KDT342B	KDT342R	KDT342GY

**3 sizes** H x W x D:

800 x 650 x 400mm

800 x 900 x 500mm

800 x 800 x 450mm

**Option**

1 or 2 drawers available (on 800 x 450mm model only)

**Accessories** (extra)

Rubber mat shelf inlay

L x W	Ref
650 x 400	RM1
800 x 450	RM2
900 x 500	RM3

**Knock-down trolleys**

Tough steel angle uprights,

rigid sheet steel shelf trays

Tubular push / pull handle.

Finished in blue, red or grey epoxy

100mm dia castors with black rubber tyres,

2 braked swivel and 2 fixed.



KDT242B

**General specification:**

- Welded tubular and flat steel chassis frame.
- All plywood shelves are fixed, polyurethane coated with hardwood edge and have 20mm upstand.
- Steel shelves have 25 mm upstand.
- All steelwork is finished in blue epoxy.
- Cupboards and drawers supplied with lock and 2 keys.

**Wheels:**

- Standard design 2 swivel 2 fixed 125 mm dia. rubber tyres.

### TT160 Trolley Series



7 Model TT160 Series  
Overall H x W x L mm  
1045 x 620 x 1160  
Capacity 150 kg

Model **TT160**Shelf heights mm  
285 and 805Model **TT161**Shelf heights mm  
285, 545 and 805



### TT160 Trolley Series



Trolley Specification	Weight	Ref
2 plywood shelves	30 kgs	<b>TT160</b>
3 plywood shelves	37 kgs	<b>TT161</b>
Plywood top shelf and 2 plywood half shelves		
1 steel cupboard H x W x D 485 x 500 x 600 mm	52 kgs	<b>TT162</b>
Plywood top shelf with 2 steel cupboards		
Each cupboard H x W x D 485 x 500 x 600 mm	58 kgs	<b>TT163</b>
Removable steel top tray with deep 200 mm sides		
Bottom steel shelf	54 kgs	<b>TT164</b>
Top and bottom steel shelves		
2 drawers each H x W x D 95 x 500 x 460 mm	51 kgs	<b>TT165</b>
Top and bottom steel shelves, drawer and cupboard		
drawer H x W x D 95 x 500 x 460 mm	51 kgs	<b>TT166</b>
Top and bottom steel shelves		
3 drawers each H x W x D 95 x 500 x 460 mm	51 kgs	<b>TT167</b>

#### Optional extras (factory fitted)

**Pneumatic tyres:** 200 x 50 mm

Ref **B008**

**All swivel castors:** 125 dia. RT castors

Ref **B031**

**Brakes:** Total stop (pair)

Ref: **B032**





## Louvre panel trolleys

### Louvre panel trolleys

'A' frame double sided louvre panel trolleys with integral sheet steel deck storage area  
 Fully welded steel frame construction with bolt-on louvre panels  
 Tubular push/pull handle  
 Available in 2 heights (2 or 3 panels)  
 Overall heights: 1220mm and 1600mm  
 Base L x W: 1000 x 600mm  
 Deck height: 205mm  
 Wheels: 2 swivel braked and 2 fixed 125mm castors with blue resilex wheels and roller bearings.  
 Finish: Grey epoxy trolley (BS00A05) with Blue panels (BS18E53)  
 Capacity 200kg

For additional bin packs,  
 see p134



Double sided louvre panel trolley - 2 panel high  
 Ref: **LPT-12**



Double sided louvre panel trolley - 3 panel high  
 Ref: **LPT-13**



Double sided louvre panel trolley - 2 panel high  
 complete with 72 x XL2 & 36 x XL3 bins  
 Ref: **LPT-12C** (bin colours as shown)



Double sided louvre panel trolley - 3 panel high  
 complete with 108 x XL3 bins  
 Ref: **LPT-13C** (bin colours as shown)

## Tool panel trolleys

'A' frame double sided tool panel trolleys with integral sheet steel deck storage area

Fully welded steel frame construction with bolt-on tool panels

Tubular push/pull handle

Available in 2 heights (2 or 3 panels)

Overall heights: 1220mm and 1600mm

Base L x W: 1000 x 600mm

Deck height: 205mm

Wheels: 2 swivel braked and 2 fixed 125mm castors with blue resilex wheels and roller bearings.

Finish: Grey epoxy trolley (BS00A05) with Blue panels (BS18E53)

Capacity 200kg



Double sided tool panel trolley - 2 panel high

Ref: **LPT-02**



Double sided tool panel trolley - 3 panel high

Ref: **LPT-03**

## Static Tool panel

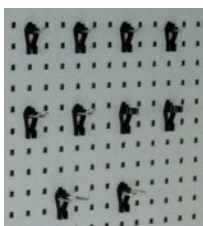
Double sided static tool panel, manufactured from 18 and 20swg sheet steel

Welded frame construction with bolt-in tool panels

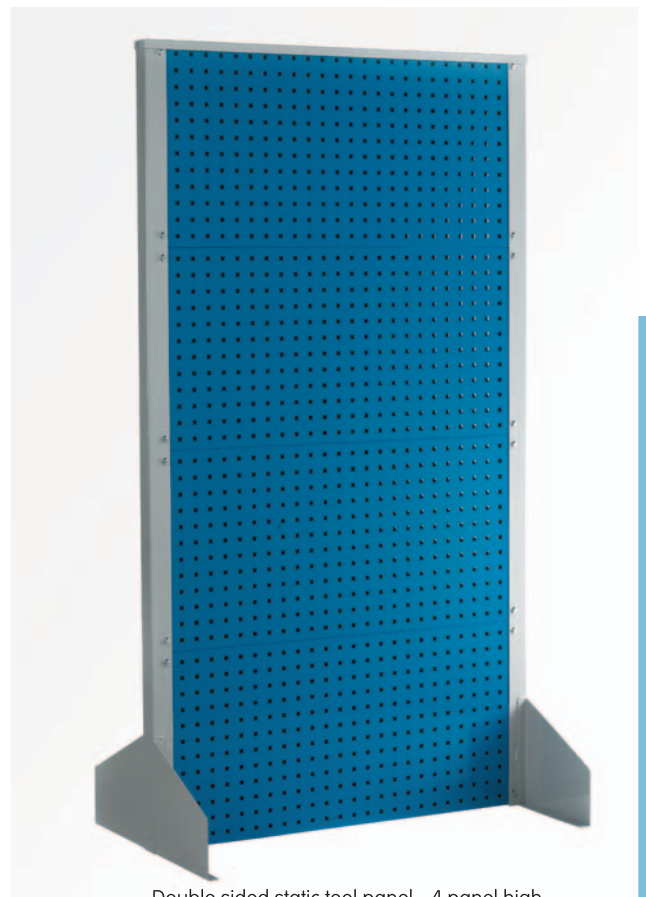
This unit requires to be fixed to floor for full stability - holes provided (fixings not supplied)

Overall H x W x D: 1840 x 1000 x 610mm

Finish: Grey epoxy trolley (BS00A05) with Blue panels (BS18E53)



For tool hooks - see p140



Double sided static tool panel - 4 panel high

Ref: **LPT-10**



## Shelf Trucks

Industry  
favourite

### Shelf Truck Capacity 500kg UDL

Welded angle chassis with tubular end frames.  
Fixed ply platform plus 3 drop-in ply shelves.  
2 standard models.  
Both available as drawbar version



Model TS31T  
with drawbar handle



Model TS30 Standard

Overall height 1780 mm.  
Overall length = Deck length + 200mm  
2 fixed 2 swivel castors with  
200 mm dia. rubber tyred wheels.  
Roller bearings.  
Finish: Blue epoxy.

Brakes: Total stop  
Ref: **B013** (pair) Extra

Spring loaded  
catch holds  
drawbar in  
vertical  
position

Model	Deck size L x W mm	Deck height mm	Shelf levels mm	Weight Kgs	Ref
Standard	1000 x 700	275	635 : 1005 : 1375	65	<b>TS30</b>
	1200 x 800	275	635 : 1005 : 1375	80	<b>TS31</b>
With drawbar handle	1000 x 700	275	635 : 1005 : 1375	69	<b>TS30T</b>
	1200 x 800	275	635 : 1005 : 1375	84	<b>TS31T</b>
Capacity UDL kg	Truck max 500; per shelf max 50; base 350 when shelves fully loaded				

## Shelf Trucks Capacity 500kg

with rod superstructure on 3 sides



Welded angle chassis and tubular superstructure with vertical retaining rods  
Fixed ply platform and 4 removable ply shelves.  
Finish: Blue epoxy.

Wheels: 2 fixed 2 swivel castors with 200 mm dia. rubber tyred wheels with roller bearings.

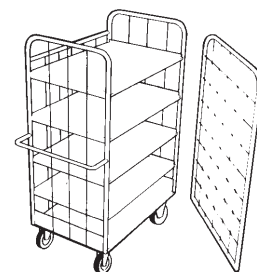
### Optional brakes:

Total stop

Ref: **B013** (pair)



Optional drawbar



Optional hook on front

Model	Deck / Shelf L x W mm	Open fronted		With hook on front	
		Wt	Ref	Wt	Ref
Standard	1000 x 700	88kg	<b>TS32</b>	98kg	<b>TS33</b>
	1200 x 800	106kg	<b>TS34</b>	117kg	<b>TS35</b>
With drawbar	1000 x 700	90kg	<b>TS32T</b>	100kg	<b>TS33T</b>
	1200 x 800	108kg	<b>TS34T</b>	119kg	<b>TS35T</b>
Deck height	275mm				
Shelf heights	At 300 mm centres 570 : 870 : 1170 : 1470mm				
Clearance	280 mm				
Capacity UDL kg	Truck max 500; per shelf max 50; base 300 when shelves fully loaded				

Overall length = Deck length + 200mm

## Shelf Trucks Capacity 500kg UDL

with mesh superstructure - 3 sides and top

Weld mesh infill 50 x 50 mm  
5 drop-in shelves  
Welded angle chassis and superstructure.  
50 x 50mm mesh infill panels.  
Fixed ply platform and 5 removable ply shelves.  
Finish: Blue epoxy.

Wheels: 2 fixed 2 swivel castors with 200 mm dia. rubber tyred wheels with roller bearings.

### Options:



Total stop brakes  
Ref: **B013** (pair)



Optional hinged doors

Model	Deck / Shelf L x W mm	Open fronted		With mesh doors	
		Wt	Ref	Wt	Ref
Standard	1000 x 700	110kg	<b>TS36</b>	127kg	<b>TS37</b>
	1200 x 800	120kg	<b>TS38</b>	138kg	<b>TS39</b>
With drawbar	1000 x 700	112kg	<b>TS36T</b>	129kg	<b>TS37T</b>
	1200 x 800	122kg	<b>TS38T</b>	140kg	<b>TS39T</b>
Deck height	275mm				
Shelf heights	At 250 mm centres 525 : 775 : 1025 : 1275 : 1525mm				
Clearance	230 mm				
Capacity UDL kg	Truck max 500; per shelf max 50; base 250 when shelves fully loaded				





# Heavy Duty Container Trucks

## Standard Container Trucks

Capacity 500kg



Model MT20  
Popular container truck  
for all industries

### General specification - Standard & Security

Strong chassis with inset timber base.  
Rugged superstructure with standard half-drop side.  
Available with choice of mesh or ply infill panels.

### 2 sizes available:

Internal L x W: 975 x 675mm  
1175 x 775mm  
O/all L x W: 1150 x 730mm  
1360 x 830mm

Overall height: 1235 mm

Effective height: 980 mm

Finish: Blue epoxy

Polyurethane coated ply.

Wheels: 2 swivel 2 fixed 200 mm dia. castors  
with rubber tyres. Roller bearings

Total stop brakes Ref: **B013** (pair)

We can  
manufacture  
Standard or  
Security  
Container Trucks  
to your special  
sizes

## Security Container Trucks

Capacity 500kg



Model PLT22  
Truck offering full security  
with contents privacy

### Security Container Trucks

Factory fitted with lockable lids.

Steel framework infilled with mesh or plywood, and hinged centrally  
along its own length and to main body of truck.

Fitted with 2 chain stays and padlock hasp (padlock not included)

When lid is closed, standard half drop side is prevented from opening.



Model MT21  
Truck offering full security  
with visibility

### Standard Container Trucks

Int. size L x W mm	Side Type	Wt	without lid Ref	Factory fitted Bumper strip Ref
975 x 675	Mesh	62 kg	<b>MT19</b>	<b>BS2</b>
	Ply	82 kg	<b>PLT19</b>	<b>BS2</b>
1175 x 775	Mesh	71 kg	<b>MT20</b>	<b>BS3</b>
	Ply	93 kg	<b>PLT20</b>	<b>BS3</b>

### Security Container Trucks

Int. size L x W mm	Side Type	Wt	with lid Ref	Factory fitted Bumper strip Ref
975 x 675	Mesh	73 kg	<b>MT21</b>	<b>BS2</b>
	Ply	98 kg	<b>PLT21</b>	<b>BS2</b>
1175 x 775	Mesh	85 kg	<b>MT22</b>	<b>BS3</b>
	Ply	112 kg	<b>PLT22</b>	<b>BS3</b>

## Narrow Aisle Shelf Trucks

### Capacity 350kg UDL

Designed for use in narrow gangways and confined spaces, easily passes through standard doorways.

Combination of options meet most requirements in workshops, warehouses, hospitals etc.

Deck capacity 150 kg; shelf capacity 100 kg

Overall L x W x H: 1030 x 625 x 1785 mm

Deck L x W: 960 x 600mm

Shelf L x W: 960 x 560mm

Heights from floor:

Deck 220mm

1st shelf 720mm

second shelf 1200mm

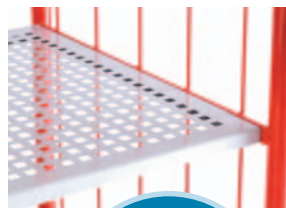
Manufactured from tubular steel framework with steel rod infill panels, and punched steel, flush surface shelves.

Castors: 2 fixed, 2 swivel with 160mm dia rubber tyred wheels with roller bearings.

Finish: Main frame red epoxy; deck and shelves light grey epoxy.

**Option:** Total stop brakes

Ref: **B024** (pair)



Air-flow  
punched steel  
shelves with  
flush surface

Ends and  
shelves fixed  
Both sides  
hook-on

Description	total capacity	Wt Kg	Ref
Deck + 2 ends + 2 shelves	350 kg	50	<b>TS62</b>
Deck + 2 ends + 2 shelves + 1 side	350 kg	55	<b>TS63</b>
Deck + 2 ends + 2 shelves + 2 sides	350 kg	60	<b>TS64</b>



Model TS62

**48**  
HOURS  
DESPATCH



Model TS63



Model TS64